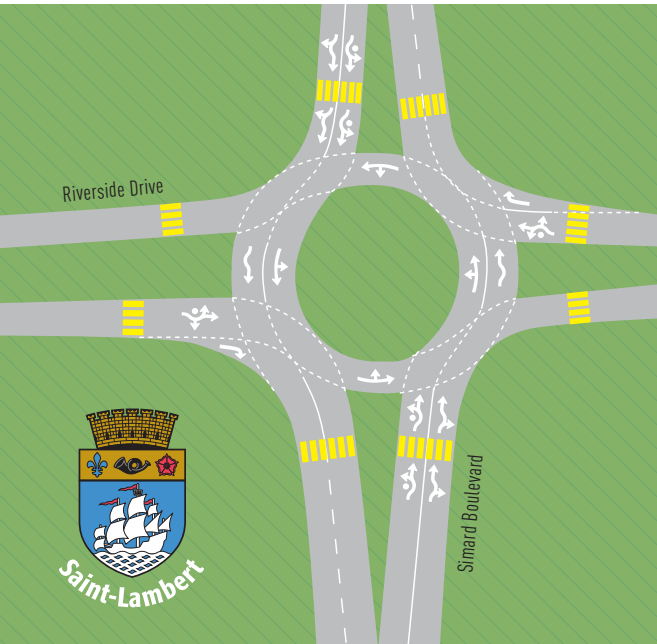


SAINT-LAMBERT'S FIRST ROUNDABOUT

The roundabout at the Simard Boulevard and Riverside Drive intersection will be open to traffic in December. Here are a few rules to follow to navigate it safely.



Here's how to use it!

1

SLOW DOWN

Reduce your speed as you approach the roundabout to enter safely.



2

SELECT THE CORRECT LANE

Get into the lane you will use for your desired exit and stay in it until you exit.



3

YIELD ON ENTRY

Before entering the roundabout, you must first yield to pedestrians and cyclists, and then to vehicles already in the circle.

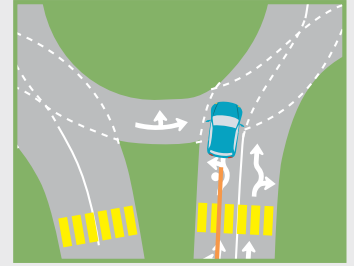
You may have to come to a complete stop while waiting for a safe gap in the traffic flow to enter.



4

ENTER THE ROUNDABOUT

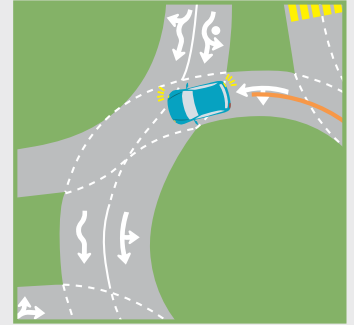
Safely enter the roundabout using the lane you have chosen for the exit you will use.



5

SIGNAL BEFORE EXITING

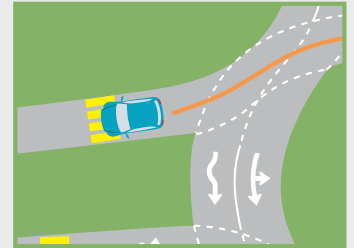
As you approach your exit, signal right to indicate your intention. Never stop in a roundabout, unless it is to avoid a collision.



6

EXIT THE ROUNDABOUT

Exit the roundabout. Yield to pedestrians and cyclists when necessary.



CYCLISTS AND PEDESTRIANS

The roundabout design includes crosswalks for pedestrians and cyclists. Cameras that automatically detect pedestrian or cyclist activity will activate lighted signs to warn motorists of their presence at the crosswalks. For their safety, we ask that pedestrians and cyclists always use the crosswalks to cross the road.